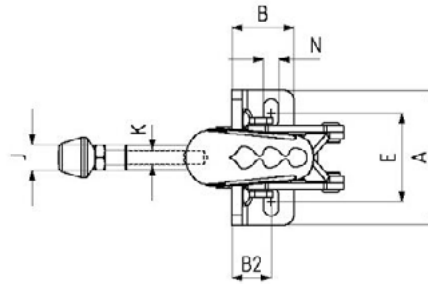
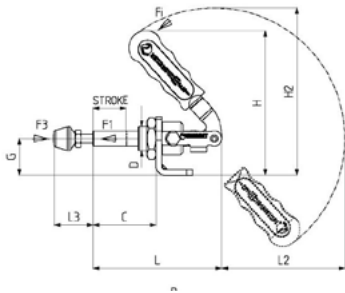


## 511 - Straight Line Push-Pull Type Toggle Clamps

Body Mounting Base: Horizontal

Part Number	F1 (kg)	F3 (kg)	Fi F1:Fi	Compression Screw	Stroke
19-511-1	81	98	24:1	M5 x 35	22
19-511-2	152	173	26:1	M6 x 40	27
19-511-3	254	269	27:1	M8 x 50	38
19-511-5	356	377	38:1	M10 x 70	53

F1 Exerting Force. F3 Holding Capacity. Fi Applied Force



Part Number	A	B	B2	C	D	E	G	H	H2	J	K	L	L2	L3 min	L3 max	N
19-511-1	45	20	11.5	34	M12x1.5	22.5-32.5	19.5	72.5	85	8	M5	69	60	15	38	5.5x10.5
19-511-2	53	24.5	15.5	42	M16x1.5	30-40	24.5	96	111	10	M6	86	80	19	46	6x11
19-511-3	60	30	17.5	56	M20 x1.5	33.5-42.5	30.5	137	120	12	M8	116	80	24	58	6.5x11
19-511-5	78	36	21	75	M24x1.5	45-57	38	152	179	14	M10	155	135	32	74	8.5x16