

## Retaining Ring Washers

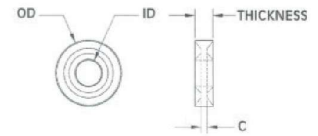
Protect surfaces

Designed to prevent the loss of screws and bolts.

The washer allows preliminary mounting of the bolt before securing with a nut. The tapered part of the washer provides locking and the screwed assembly. The tapered part of the washer also cold forms and fully enters the pitch of the screw to provide sealing.

Part Number	OD mm	ID mm	Thickness mm	Screw Size
03-PNWR3/8	8.15	3.20	2.24	4
03-PNWR4/9	9.22	3.91	2.41	6
03-PNWR4/10	9.65	4.09	2.62	8
03-PNWR5/10	10.69	5.08	3.05	10
03-PNWR6/12	12.70	6.15	3.53	1/4"
03-PNWR8/16	16.26	8.08	4.01	5/16"
03-PNWR9/18	19.70	9.68	4.50	3/8"
03-PNWR12/25	25.40	12.80	5.00	1/2"

Material: Natural Nylon 6/6



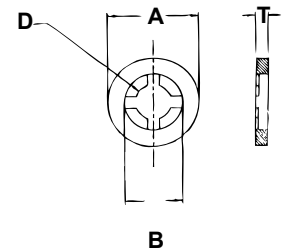
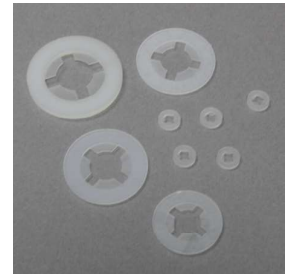
## Self Retaining Flat Washers

Specially configured ID grips screw shank

• Facilitate pre-assembly and reduce cost

Part Number	Screw Size	Inside Diameter D	Inside Diameter B	OD A	Thickness T
03-RW3/5A	M2.5	2.0	2.9	5.2	0.8
03-RW3/5B	M2.5	2.0	2.9	5.2	1.6
03-RW4/7A	M3	2.6	4.0	6.8	0.8
03-RW4/7B	M3	2.6	4.0	6.8	1.6
03-RW4/7C	M3	2.6	4.0	6.8	3.2
03-RW5/8A	M4	3.3	5.0	8.3	0.8
03-RW5/8B	M4	3.3	5.0	8.3	1.6
03-RW6/10A	M4/M5	3.9	6.0	9.9	0.8
03-RW6/10B	M4/M5	3.9	6.0	9.9	1.6
03-RW7/12A	M5/M6	4.5	7.0	11.5	0.8
03-RW7/12B	M5/M6	4.5	7.0	11.5	1.6
03-RW10/15A	M8	6.0	9.5	15.1	0.8
03-RW10/15B	M8	6.0	9.5	15.1	1.6
03-RW10/18B	M8	7.4	11.9	18.6	1.6
03-RW12/19A	M8/M10	7.4	11.9	18.7	0.8
03-RW12/19B	M8/M10	7.4	11.9	18.7	1.6
03-RW14/23A	M10/M12	8.9	14.3	22.6	0.8
03-RW14/23B	M10/M12	8.9	14.3	22.6	1.6
03-RW18/28B	M10	11.5	17.5	26.6	1.6

Material: Natural Nylon 6/6



## Cup Washers

Protect paintwork and add finish

• Protect head of screw from electrical contact

Part Number	Screw Size	A	B	C	D	E
03-CW04	M3 / #4	7.8	6.2	2.9	3.0	4.0
03-CW06	M3 / #6	9.1	7.6	3.6	3.6	4.6
03-CW08L	M4 / #8	10.5	9.0	4.3	3.3	4.3
03-CW08*	M4 / #8	10.5	9.0	4.3	4.2	5.2
03-CW09L	M5 / #9	12.6	9.9	4.7	2.4	3.5
03-CW010B*	M5 / #10	11.9	10.4	4.9	4.8	5.9
03-CW010L	M5 / #10	14.4	9.5	5.1	3.2	4.0
03-CW25*	M6 / 1/4"	15.1	13.6	6.5	6.3	7.3

Material: Nylon 6/6

\* = Available in black

L = Low profile

15

