

## Insulating Washers

Tough, durable and chemical resistant • Isolate metal screws and reduce corrosion

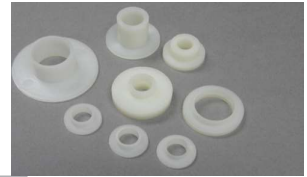
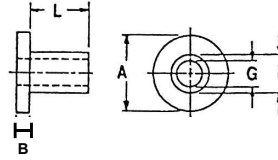
Insulate mounting screws for power transistors, create a buffer for metal screws or protect glass.

### Maximum Service Temperatures:

Nylon 6/6 Natural (UL94V2) 80 °C

PBT Polybutylene Terephthalate (UL94VO) 130 °C

PPS Polyphenylene Sulfide (UL94VO) 260 °C



Part Number	Material	Screw Size	Sleeve			Shoulder	
			I.D. G	O.D.F	Length L	O.D.A	Thickness B
03-2HW1.6	Nylon	M2.5	2.4	3.1	1.6	5.0	0.8
03-SWS0280	Nylon	M3	2.8	3.8	4.7	7.11	1.0
03-SWS0200	Nylon	M3	2.95	3.4	0.8	5.08	1.98
03-SWS0196	Nylon	M3	2.9	3.4	1.25	6.1	1.6
03-3NW0.8	Nylon	M3	2.92	3.42	0.8	5.5	1.2
03-3NW1.2	Nylon	M3	2.92	3.68	1.2	6.0	1.2
03-3NW1.6	Nylon	M3	2.92	3.68	1.6	6.0	1.2
03-3NW2.4	Nylon	M3	2.92	3.68	2.4	6.0	1.2
03-3NW2.4B*	Nylon	M3	2.92	3.68	2.4	6.0	1.2
03-3NW3.2	Nylon	M3	2.92	3.68	3.2	6.0	1.2
03-3NW4.0	Nylon	M3	2.92	3.68	4.0	6.0	1.2
03-3NW4.8	Nylon	M3	2.92	3.68	4.8	6.0	1.2
03-3NW6.3	Nylon	M3	2.92	3.68	6.3	6.0	1.2
03-3NW12.7	Nylon	M3	2.92	3.68	12.7	6.0	1.2
03-3RW2.4	Nylon	M3	2.92	3.79	2.4	7.9	1.6
03-3NT0.8	Nylon	M3	2.92	3.40	0.8	5.5	1.2
03-3NT1.4	Nylon	M3	2.92	3.53	1.4	6.1	0.5
03-3NT2.0	Nylon	M3	3.0	3.45	2.0	6.4	1.2
03-3NT3.2	Nylon	M3	3.0	3.53	3.2	6.4	1.2
03-SWS0253	Nylon	M3	3.0	3.43	1.3	5.1	2.0
03-3SM2.0	Nylon	M3	3.1	4.0	2.0	6.2	1.0
03-3SM8.0	Nylon	M3	3.1	4.0	8.0	6.2	1.0
03-SWS0440	Nylon	1/8"	3.3	3.9	7.9	7.9	0.8
03-3TW0.6	PBT	M3 - TO 220	3.0	3.5	0.6	6.2	0.4
03-3TW1.2	PBT	M3 - TO 220	3.0	3.5	1.2	6.2	1.0
03-3TW1.6	PBT	M3 - TO 220	3.0	3.5	1.6	6.1	1.4
03-3TW2.0	PBT	M3 - TO 220	3.0	3.5	2.0	6.0	2.0
03-3TW2.5	PBT	M3 - TO 220	3.0	3.5	2.5	6.2	2.0
03-3TW3.0	PBT	M3 - TO 220	3.0	3.5	3.0	6.2	1.5
03-BSW125140	PPS	M3 - TO 220	2.84	3.56	3.18	7.1	1.07
03-BSW032135	PPS	M3 - TO 220	2.95	3.43	0.81	5.5	1.02
03-BSW031145	PPS	M3 - TO 220	3.0	3.68	0.79	7.1	1.19
03-SWS0478	Nylon	M3	3.5	5.59	19.05	8.26	1.19
03-3UW1.6	Nylon	#6	3.6	4.3	1.6	7.4	1.2
03-SWS0469	Nylon	M4	4.0	5.3	3.1	9.85	4.75
03-4RX1.2	Nylon	M4	4.0	6.2	1.2	10.2	1.2
03-4NV1.6	Nylon	M4	4.1	4.9	1.6	7.6	1.2
03-4NWM5.0	Nylon	M4	4.1	6.0	5.0	8.4	1.5
03-4RX0.8	Nylon	M4	4.2	6.3	0.8	9.5	1.6
03-SWS1016	Nylon	M4	4.2	6.35	11.1	12.7	3.2
03-4NW3.2	Nylon	M4	4.4	5.2	3.2	8.7	1.6
03-4NW6.3	Nylon	M4	4.4	5.2	6.3	8.7	1.6
03-SWS2583	Nylon	M4	4.45	8.0	2.1	12.9	1.5
03-SWS0425	Nylon	M5	4.98	6.35	0.8	8.0	1.6
03-SWS0425X	Glass filled polyester	M5	4.98	6.35	0.8	8.0	1.6
03-SWS1096	Nylon	M5	5.0	7.9	9.53	11.1	1.4
03-5NW1.6	Nylon	M5	5.1	6.6	1.6	10.1	1.6
03-5NW3.6	Nylon	M5	5.1	6.6	3.6	10.1	1.6

\* = Black Nylon 6/6