

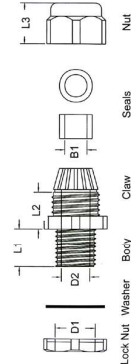
Metric Integral Claw Type - IP68

One piece body/claw speeds up assembly • UR E186042

Metric Thread

| Part Number | Hole Diameter D1 | D2 | B1 | L1 | L2 | L3 | Cable Dia. Range mm | Colour |
|-------------|------------------|------|------|------|------|------|---------------------|--------|
| 23-MAG12 | 12 | 8.3 | 6.0 | 7.9 | 12.1 | 13.3 | 3-6.5 | Black |
| 23-MAG12GY | 12 | 8.3 | 6.0 | 7.9 | 12.1 | 13.3 | 3-6.5 | Grey |
| 23-MAG12W | 12 | 8.3 | 6.0 | 7.9 | 12.1 | 13.3 | 3-6.5 | White |
| 23-MAG16 | 16 | 10.9 | 9.6 | 15.5 | 14.4 | 16.7 | 5-10 | Black |
| 23-MAG16GY | 16 | 10.9 | 9.6 | 15.7 | 14.4 | 16.7 | 5-10 | Grey |
| 23-MAG16W | 16 | 10.9 | 9.6 | 15.7 | 14.4 | 16.7 | 5-10 | White |
| 23-MAG20 | 20 | 14.8 | 12.9 | 15.0 | 19.5 | 18.4 | 10-14 | Black |
| 23-MAG25 | 25 | 18.6 | 16.4 | 15.0 | 18.7 | 22.3 | 13-18 | Black |
| 23-MAG32 | 32 | 26.0 | 23.4 | 14.7 | 20.3 | 26.2 | 18-25 | Black |
| 23-MAG40 | 40 | 33.0 | 30.6 | 17.7 | 23.4 | 31.6 | 22-32 | Black |
| 23-MAG50 | 50 | 41.2 | 38.2 | 17.3 | 25.7 | 31.6 | 30-38 | Black |
| 23-MAG63L | 63 | 56.0 | 49.5 | 25.4 | 29.5 | 36.5 | 42-50 | Black |

Material: Black Nylon 6/6 UL94V2



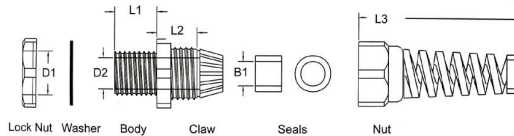
Metric Strain Relief Type - IP68

One piece body/claw speeds up assembly

Metric Thread

| Part Number | Hole Diameter D1 | D2 | B1 | L1 | L2 | L3 | Cable Dia. Range mm |
|-------------|------------------|------|------|------|------|-------|---------------------|
| 23-MAG12SR | 12 | 8.3 | 6.9 | 7.9 | 12.1 | 53.3 | 3-6.5 |
| 23-MAG16SR | 16 | 10.9 | 10.5 | 15.5 | 14.4 | 74.9 | 5-10 |
| 23-MAG20SR | 20 | 15.0 | 14.0 | 15.0 | 19.5 | 96.2 | 10-14 |
| 23-MAG25SR | 25 | 18.6 | 18.4 | 15.2 | 19.5 | 111.2 | 13-18 |

Material: Black Nylon 6/6 UL94V2



Metric Reduction Fittings

Switch from large metric gland to small one • Thread Length 8mm

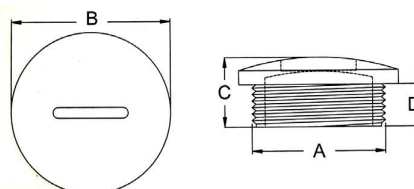
| Part Number | D1 | Internal Thread D2 |
|-------------|-----|--------------------|
| 23-M2012 | M20 | M12 |
| 23-M2016 | M20 | M16 |
| 23-M2516 | M25 | M16 |
| 23-M2520 | M25 | M20 |
| 23-M4032 | M40 | M32 |

Material: Black Nylon 6/6 UL94V2



Metric Screw Plugs

| Part Number | A | B | C | D |
|-------------|-----|------|------|------|
| 22-MSP12 | M12 | 15.0 | 10.0 | 6.0 |
| 22-MSP16 | M16 | 20.0 | 10.5 | 6.0 |
| 22-MSP20 | M20 | 24.0 | 10.5 | 6.0 |
| 22-MSP25 | M25 | 29.7 | 12.8 | 7.8 |
| 22-MSP32 | M32 | 36.6 | 13.3 | 7.8 |
| 22-MSP40 | M40 | 45.8 | 13.4 | 7.8 |
| 22-MSP50 | M50 | 55.5 | 16.2 | 9.8 |
| 22-MSP63 | M63 | 69.3 | 17.5 | 11.8 |



M12, M16, M20, M25 & M50 available in grey - specify GY at end of Part Number eg. 22-MSP12GY

