

## Extruded Aluminum Enclosures - Channel Mount - 1455 NC Series

Designed to house P.C. boards or equipment - for easy enclosure mounting to aluminum channel.

- Two versions to choose from (open bezel with metal endplates OR solid ABS plastic bezel).
- Sized for P.C. boards with 92mm (min.) to 98mm (max.) width. Enclosures will not accept & were not designed for 100mm wide eurocard.
- P.C. boards mount horizontally by sliding into internal slots extruded into the enclosure body.
- Rugged one piece body - constructed from extruded aluminum with a minimum thickness of .09" (2.29 mm).
- Extruded body & aluminum endplates (on metal endplate version) are clear anodized.
- Open bezel - metal endplate version includes eight (8) clear zinc plated assembly screws. NOTE: Recommended screw torque is 5 lbf/in
- Solid bezel version includes eight (8) black assembly screws. NOTE: Recommended screw torque is 5 lbf/in.



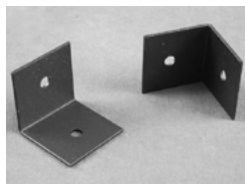
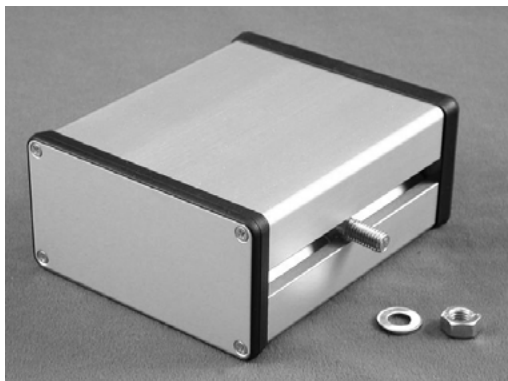
Open Bezel With Metal Endplate Version

Solid ABS Plastic Bezel Version

Part Number	Overall Enclosure Dimensions		
	Length	Width	Height
26-1455NC1201	120	103	53
26-1455NC1601	160	103	53
26-1455NC2201	220	103	53

Part Number	Overall Enclosure Dimensions		
	Length	Width	Height
26-1455NC1202	120	103	53
26-1455NC1602	160	103	53
26-1455NC2202	220	103	53

## Channel Mounting Kits



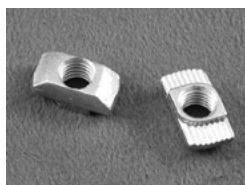
### 26-1455NCFL -

Flanged brackets (sold in pairs).



### 26-1455TBOLT -

Quantity two (2) - 8mm X 20 "T" bolts, washers & hex nut.



### 26-1455TNUT -

Quantity two (2) - 8mm "T" nuts



### 26-1455TSNUT -

Quantity two (2) - 8mm "T" nuts & springs